

### Infrastructure Information

	<b>Head</b>	<b>Sr. No.</b>	<b>Department</b>	<b>Constructed Area</b>
1	Director's /Head's Room	1.	Zoology Deptt	15x7=105 Sq.ft.
		2.	Physics Deptt.	7x16=112 Sq.ft.
		3.	Microbiology Deptt.	7x12=84 Sq.ft.
		4.	Chemistry Deptt	7x11=77 Sq.ft.
		5.	Env.Science Deptt.	7x18=128 Sq.ft.
		6.	Mathematics Deptt.	7x19=133 Sq.ft.
		7.	Computer Science Deptt.	12x6=72 Sq.ft.
		8.	English Deptt.	17x8=136 Sq.ft.
		9.	Marathi Deptt.	13x12=156 Sq.ft.
		10.	Commerce Deptt.	25x11=275 Sq.ft.
		11.	Geography Deptt.	11x19=209 Sq.ft.
		12.	NSS Deptt.	15x8=120 Sq.ft.
		13.	Hindi Deptt.	11x8=88 Sq.ft.
		14.	Cultural Deptt.	11x8=88 Sq.ft.
		15.	Political Science Deptt.	11x8=88 Sq.ft.
		16.	History Deptt.	11x8=88 Sq.ft.
		17.	Economics Deptt.	11x8=88 Sq.ft.
		18.	Sociology Deptt.	12x8=96 Sq.ft.
		19.	B.F.D. Deptt.	17x8=136 Sq.ft.
		20.	MCA Deptt.	9x12=108 Sq.ft.
		21.	Physical Education Deptt.	16x11=176 Sq.ft.
		22.	IHLR&SS	25X26=650 Sq.ft.
2	Administrative office		Principal Office	38x7=266 Sq.ft.
			Waiting Room	11x9=99 Sq.ft.
			Registrar Office	11x10=110 Sq.ft.

			Account Office	18x16=288 Sq.ft.
			Superintendent Office	9x8=72 Sq.ft.
			Computer Room	10x9=90Sq.ft.
			Office	30x31=930 Sq.ft.
			MCA Office	20x15=300 Sq.ft.
			BFD Office	12x7=84 Sq.ft.
3	Staff Room for scientists / Members of Faculty	1	Staff Room	25x19=475 Sq.ft.
		2		26x12=312 Sq.ft.
		3		33x15=495 Sq.ft.
		4		29x12=348 Sq.ft.
		5		16x7=112 Sq.ft.
4	Library	1	Library (Main)	61x40=2440 Sq.ft.
		2	Library (MCA)	33x14=462 Sq.ft.
		3	Library Internet Room	40x40=160 Sq.ft.
		4	Library Reading Room	33x13=429 Sq.ft.
		5	Library Internet Room	16x13=208 Sq.ft.
		6	Library Reading Room	50x25 =1250 Sq.ft.
5	Conference Room (03)	1	Shantaram Potdukhe Hall	92x46=4232 Sq.ft.
		2	Abdul Shafi Hall	40x30=1200 Sq.ft.
		3	Shalikgram Gawalpanchi Hall	40x30=1200 Sq.ft.
6	Class Room (60)	1.		25x22=550 Sq.ft.
		2.		25x12=300 Sq.ft.
		3.		24x25=600 Sq.ft.
		4.		23x26=598 Sq.ft.
		5.		23x12=276 Sq.ft.
		6.		23x25=575 Sq.ft.
		7.		35x16=560 Sq.ft.
		8.		19x10=190 Sq.ft.
		9.		19x12=228 Sq.ft.
		10.		19x12=228 Sq.ft.
		11.		19x11=209 Sq.ft.
		12.		19x12=228 Sq.ft.
		13.		19x11=209 Sq.ft.

		14.		36x29=1044 Sq.ft.
		15.		25x25=625 Sq.ft.
		16.		25x25=625 Sq.ft.
		17.		25x12=300 Sq.ft.
		18.		25x12=300 Sq.ft.
		19.		23x25=575 Sq.ft.
		20.		24x25=600 Sq.ft.
		21.		23x25=575 Sq.ft.
		22.		24x25=600 Sq.ft.
		23.		24x25=600 Sq.ft.
		24.		24x25=600 Sq.ft.
		25.		24x25=600 Sq.ft.
		26.		23x25=575 Sq.ft.
		27.		25x25=625 Sq.ft.
		28.		26x25=650 Sq.ft.
		29.		26x25=650 Sq.ft.
		30.		25x12=300 Sq.ft.
		31.		23x25=575 Sq.ft.
		32.		36x25=900 Sq.ft.
		33.		31x24=744 Sq.ft.
		34.		25x20=500 Sq.ft.
		35.		23x21=483 Sq.ft.
		36.		16x14=224 Sq.ft.
		37.		26x14=364 Sq.ft.
		38.		24x25=600 Sq.ft.
		39.		24x26=624 Sq.ft.

		40.		24x25=600 Sq.ft.
		41.		26x25=650 Sq.ft.
		42.		26x25=650 Sq.ft.
		43.		25x25=625 Sq.ft.
		44.		26x12=312 Sq.ft.
		45.		24x26=624 Sq.ft.
		46.		24x26=624 Sq.ft.
		47.		25x26=650 Sq.ft.
		48.		21x14=294 Sq.ft.
		49.		17x13=221 Sq.ft.
		50.		19x14=266 Sq.ft.
		51.		34x14=476 Sq.ft.
		52.		19x14=266 Sq.ft.
		53.		19x14=266 Sq.ft.
		54.		19x19=361 Sq.ft.
		55.		29x19=551 Sq.ft.
		56.		19x10=190 Sq.ft.
		57.		30x16=480 Sq.ft.
		58.		26x16=416 Sq.ft.
		59.		30x16=480 Sq.ft.
		60.		21x15=315 Sq.ft.
		61.		15x21=315 Sq.ft.
		62.		15x21=315 Sq.ft.
		63.		15x21=315 Sq.ft.
		64.		15x21=315 Sq.ft.
		65.		50x25=1250 Sq. ft

Laboratory 27	1.	Zoology Deptt. Lab.1	26x27=702Sq.ft.
	2.	Zoology Deptt. Lab. 2	13x20=260 Sq.ft.
	3.	Zoology Deptt. Lab. 3	23x18=464 Sq.ft.
		Zoology Deptt. Dark Room	8x7=56 Sq.ft.
	4.	Physics Dept Lab. 1	25x36=900 sq.ft.
		Dark Room	7x17=119 Sq.ft.
	5.	Physics Lab. 2	34x15=510 Sq.ft.
	6.	Physics Lab.3	28x27=756 Sq. ft.
	7.	Microbiology Lab. 1	25x38=950 Sq.ft.
	8.	Micro Lab. 2	39x14=546 Sq.ft.
	9.	Chemistry Lab.1	25x38=950 Sq.ft.
		Weighing Room	7x14=98 Sq.ft.
	10.	Chemistry Lab.2	34x15=510 Sq.ft.
	11.	Chemistry Lab.3	34x15=510 Sq.ft.
	12.	Environment Science	22x24=528 Sq.ft.
	13.	Environment Science	25x12=300 Sq.ft.
	14.	Biotechnology Deptt.	30x20=600 Sq.ft.
	15.	Computer Sc Deptt.	25x24=600 Sq.ft.
	16.		19x12=228 Sq.ft.
	17.	B.Com Comp. Lab	22x13=286 Sq.ft.
	18.	Geography Deptt.	23x19=437 Sq.ft.
	19.		24x19=456 Sq.ft.
	20.	Home Science Deptt.	24x17=408 Sq.ft.
	21.	Home Economics Deptt.	35x18=630 Sq.ft.
	22.	B.C.A. Deptt.	25x26=650 Sq.ft.
	23.	B.C.A. Deptt.	30x16=480 Sq.ft.
	24.	MCA Deptt.	33x15=495 Sq.ft.
	25.	MCA Deptt.	34x14=476 Sq.ft.
	26.	Home Science and Technology Computer lab 1	192 Sq.ft.
	27.	Home Science and Technology Laboratory	566 Sq.ft.
<b>Girls Common Room</b>			30x16=480 Sq.ft.

	<b>Canteen</b>			30X33=990 Sq.ft.
--	----------------	--	--	------------------

# Sardar Patel Mahavidyalaya, Chandrapur

Total Number of Class Room - 60

## MAIN BUILDING

### Ground Floor - 09 (7,8,9,10,11,12,15,16,19)



**Room No. 7**



**Room No. 8**



**Room No. 9**



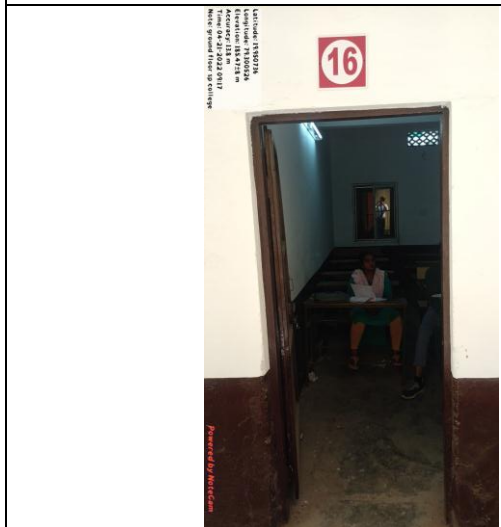
**Room No. 10**



**Room No. 11**



**Room No. 12**

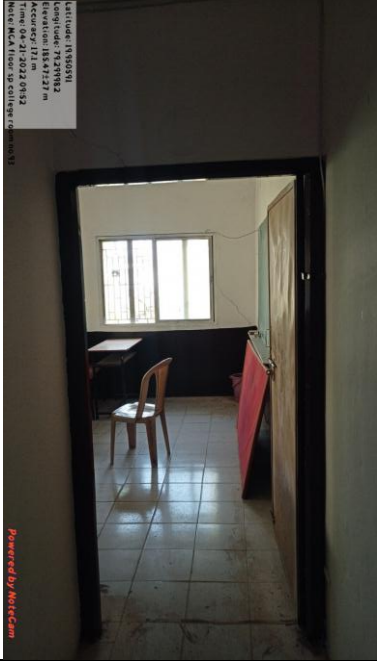


**Room No. 16**



**Room No. 19**





**Room No. 15**

**FIRST FLOOR – 07 (25,28,30,38, 39, 41,42)**



**Room No. 25**



**Room No. 28**



**Room No. 30**



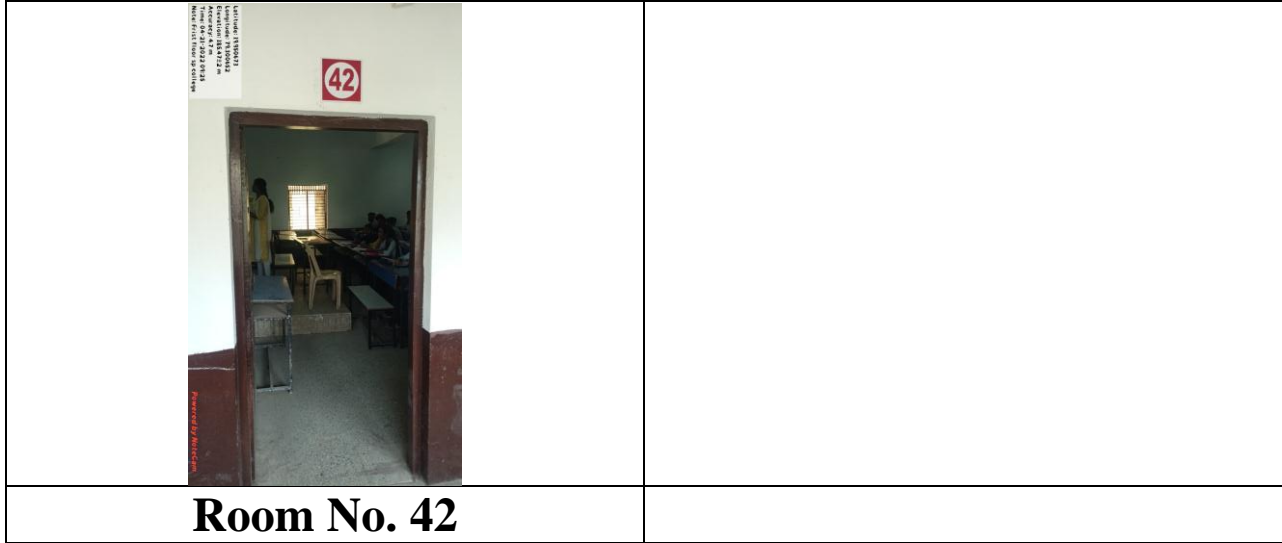
**Room No. 38**



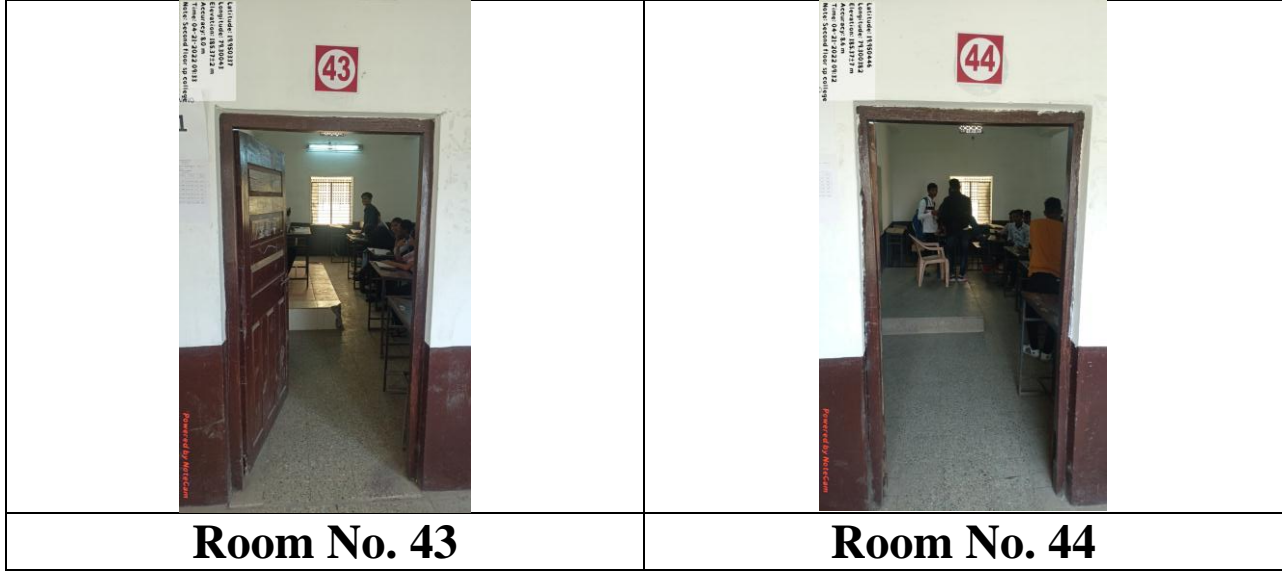
**Room No. 41**



**Room No. 39**



**SECOND FLOOR –14 (43, 44, 45, 46, 47, 54, 55, 56, 57, 58, 59, 60, 61, 63)**





**Room No. 45**



**Room No. 46**



**Room No. 47**



**Room No. 54**



**Room No. 55**



**Room No. 56**



**Room No. 57**



**Room No. 58**



**Room No. 59**



**Room No. 60**



**Room No. 61**



**Room No. 63**

**THIRD FLOOR – 12 (67,68,69,70,71,72,73,74,75,76,81,82)**



**Room No. 67**



**Room No. 68**



**Room No. 69**



**Room No. 70**



**Room No. 71**



**Room No. 72**



**Room No. 73**



**Room No. 74**



**Room No. 75**



**Room No. 76**



**Room No. 81**



**Room No. 82**

# FIRST FLOOR OFFICE BUILDING - 4



**Room No. 85**



**Room No. 86**



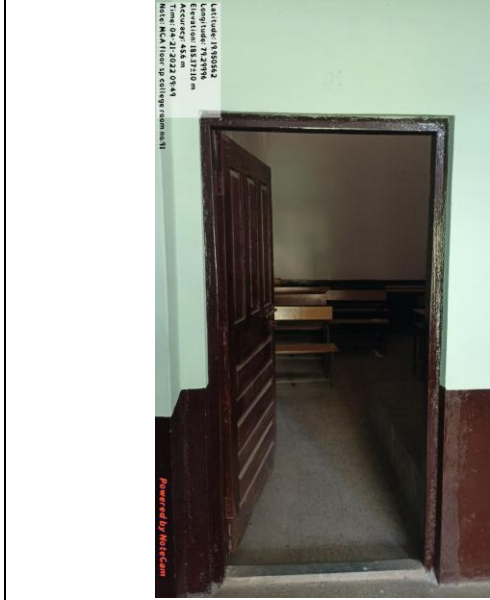
**Room No. 87**



**Room No. 89**



**MCA BUILDING – 09**  
**(205,211,216,218,219,220,226,227,228)**



**Room No. 205**



**Room No. 211**



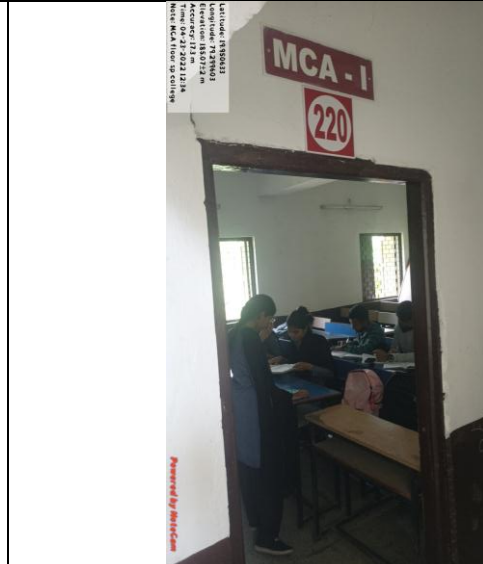
**Room No. 216**



**Room No. 218**



**Room No. 219**



**Room No. 220**



**Room No. 226**



**Room No. 227**

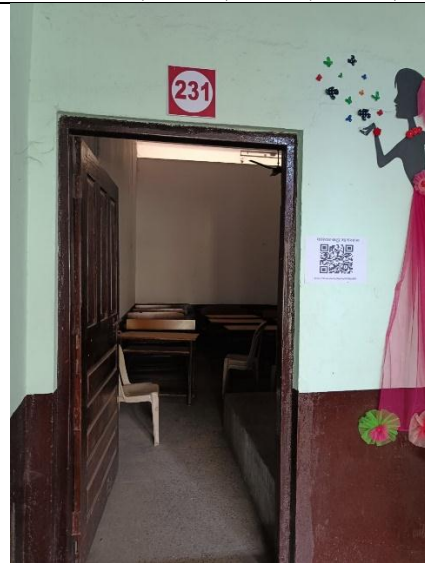


**Room No. 228**

**OFFICE BUILDING BFD DEPT. – 5 (229,231,233,234,237)**



**Room No. 229**



**Room No. 231**



**Room No. 233**



**Room No. 234**



**Room No. 237**